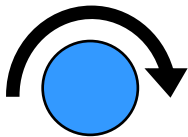
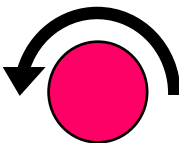


## In Floor Heating

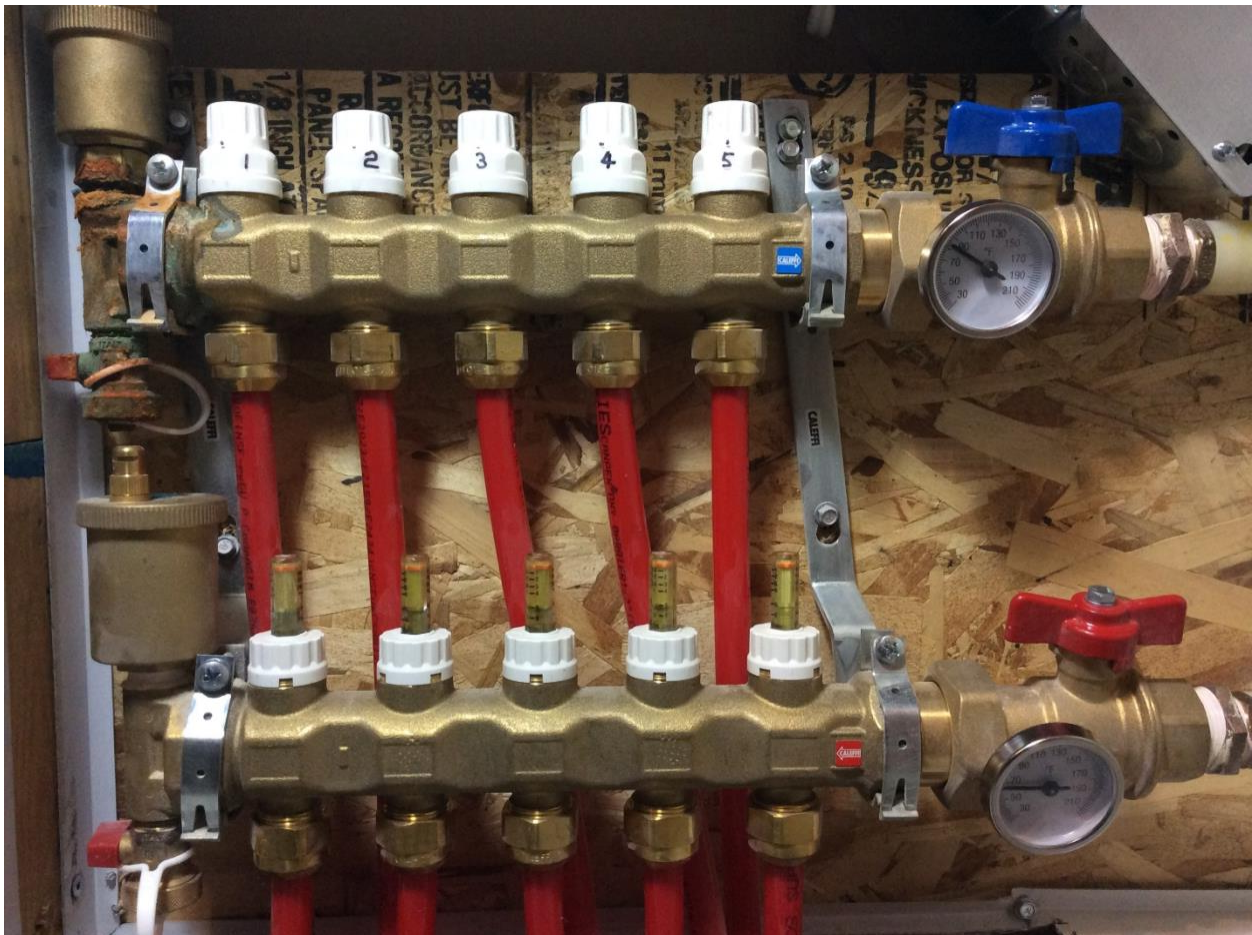
1	2	3	4	5
Living Room & Kitchen	Den & Bathroom	2 <sup>nd</sup> Bedroom	Master Bed, Bath, Closet	Garage

Looking down on the upper course of white valves:

Cooler  - Turn clockwise to shut the valve and cool the area.

Warmer  - Turn counter-clockwise to open valve and heat the area.

Valves have about 2 ¼ turns to go from fully closed to fully opened.



N.B. The photo above reflects the pattern found in units 2, 6, 10, 14, 18 and 3, 7, 11, 15, 19, 23. It is assumed that units 4, 8, 12, 16 and 1, 5, 9, 13, 17, 21 would have a similar arrangement, but the photo would be a mirror image of the one above. However, this remains to be confirmed.

## In Floor Heating

Some of you may be curious about the devices on the lower manifold, as seen in the photo below. These are flow meters used to balance each of the branch lines. The exact flow rate is not very accurate, but it is sufficient to verify that the system is working and are used to see which branch has more or less flow.



**WARNING!**

You play with these at your own risk !!!

The corporation will not be held responsible for any problems.